

AMC MD1102

USB Input Module



INSTRUCTIONS FOR INSTALLATION AND OPERATION

APPLICATION AND FEATURE LIST

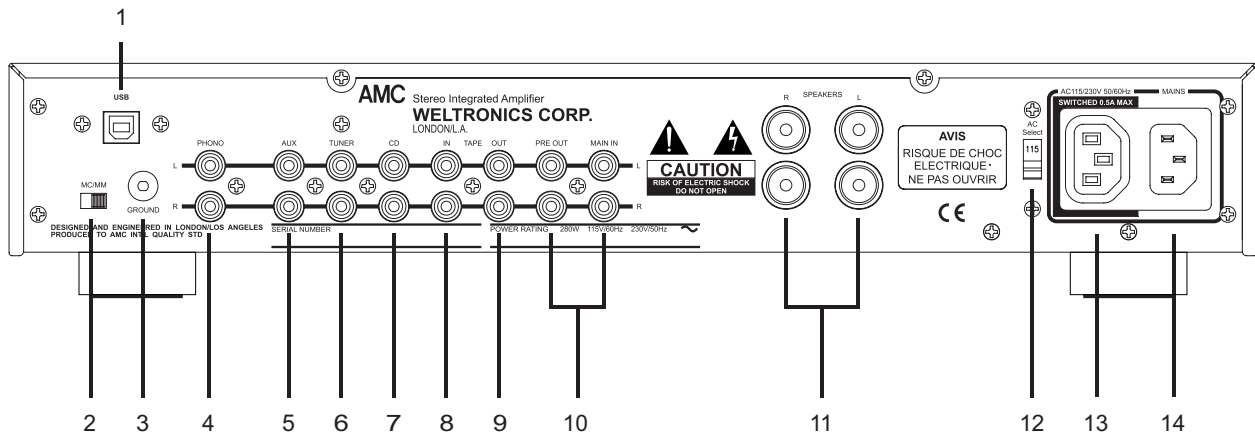
Features of the AMC_{TM} MD1102 USB Input Module

- The AMC MD1102 module is a universal series bus (USB) peripheral interface device designed specifically for the applications that require isochronous data streaming. Applications include AMC XIA Amplifier, which require the streaming of digital audio data between the host and the amplifier/speaker system via the USB connection.
- The AMC MD1102 USB Input Module is equipped with a high performance Digital to Analog Converter (DAC) for the 192KHz sampling of DVD-Audio including a 24-bit digital filter. The digital filter has high stopband attenuation with 110dB or more that reduces wide band aliasing noise. The DAC achieves the wider dynamic range, while keeping much the same superior distortion characteristics as conventional single-bit way.
- With AMC MD1102 installing into your AMC XIA Integrated Amplifier, you can enjoy CD-like high quality sound from your computer or game console.
- The AMC MD1102 is designed to meet professional quality performance standard and to provide superior value.
- Selected grade components are utilized throughout the circuit design with special emphasis on components within the audio path to ensure stable and consistent performance.

AMC™ XIA

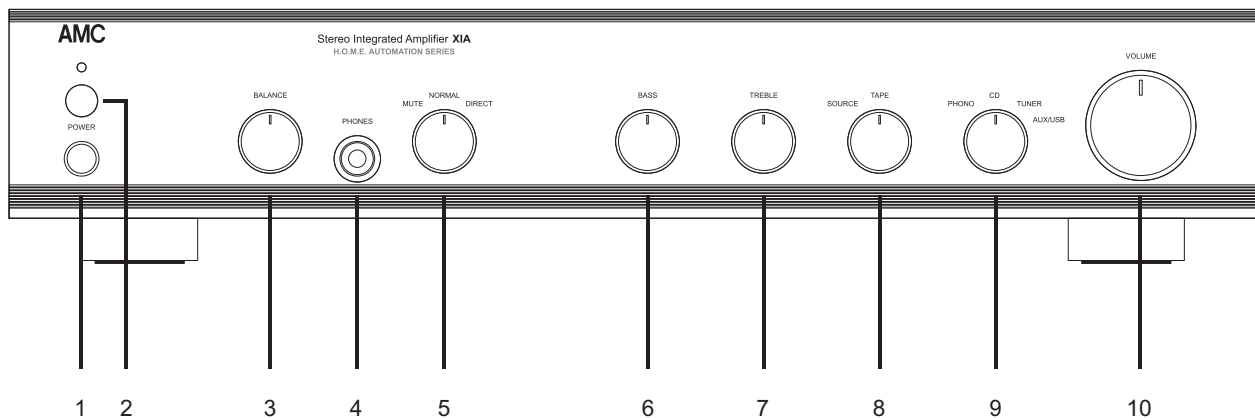
REAR PANEL CONNECTIONS/FRONT PANEL CONTROLS

REAR PANEL



- | | |
|--------------------------------------|---------------------------|
| 1.USB INPUT | 8.TAPE INPUT |
| 2.PHONO MM/MC INPUT SELECTION SWITCH | 9.TAPE OUTPUT |
| 3.PHONO GROUND TERMINAL | 10. PRE OUT/MAIN IN |
| 4.PHONO INPUT | 11. LOUDSPEAKER TERMINALS |
| 5.AUX INPUT | 12.AC SELECT SWITCH |
| 6.TUNER INPUT | 13.AC SWITCHED OUTLET |
| 7.CD INPUT | 14.AC RECEPTACLE |

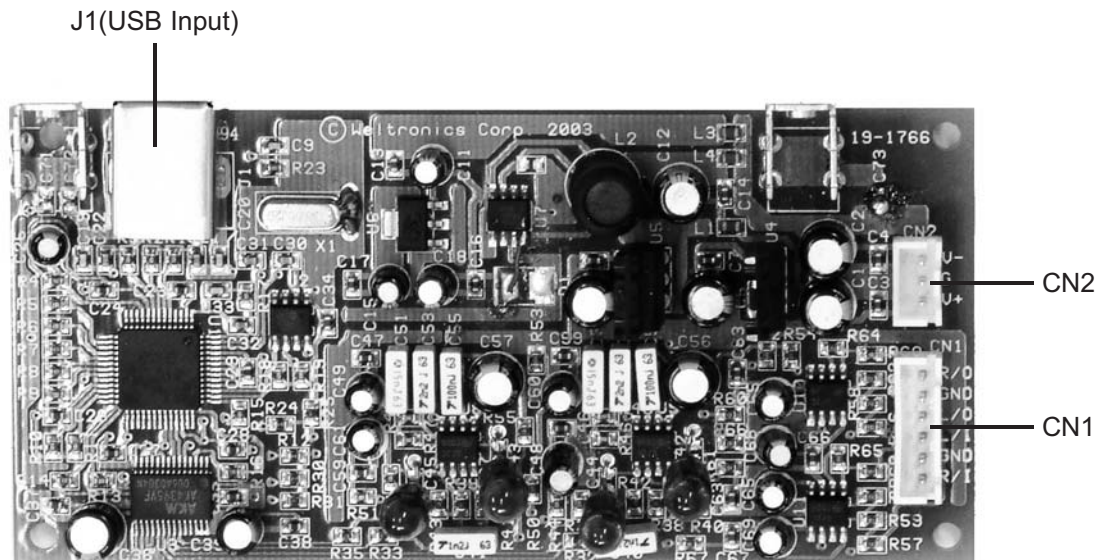
FRONT PANEL



- | | |
|-----------------------------|--------------------------|
| 1.POWER SWITCH | 6.BASS CONTROL |
| 2.INFRARED RECEIVER | 7.TREBLE CONTROL. |
| 3.BALANCE CONTROL | 8.TAPE MONITOR SWITCH |
| 4.PHONES | 9.INPUT SELECTION SWITCH |
| 5.MUTE/NORMAL/DIRECT SWITCH | 10.VOLUME CONTROL |

MD1102 USB Input Module Installation Instructions

Caution: In order to avoid risk of damage and insure optimum performance from USB Input Module and Integrated Amplifier, please take time to read this manual before you proceed to install the AMC MD1102 module.



CONNECTIONS

There are three jacks provided for external connections to the MD1102 USB Input Module. If this module is not factory-defaulted in your XIA Integrated Amplifier, we suggest that you consult AMC dealer or distributor before proceeding to install it.

1. J1 (USB Input)

This jack is to connect the USB output of the computer or game console via a USB cable. The USB connector of MD1102 accepts the standard USB cable.

2. CN1 (R/O, GND, L/O, L/I, GND, R/I)

This jack is to connect MD1102's analog audio L&R outputs to AMC XIA Integrated Amplifier. Its high resolution audio outputs will be made in parallel to the existing Aux L&R Inputs of XIA amplifier. To make the installation easy, this jack was designed with L/I and R/L input access points.

3. CN2 (V-, G, V+)

This jack is to connect to the unregulated power supply of XIA for supplying the necessary operation voltages in the module. We recommend to use an input voltage V+/V- in range of 15V to 35V at 100mA if you are not in use with AMC XIA Amplifier. Be sure to connect them in a right voltage polarity before power on your module.

The symbols beside these connectors stand for:

V-: Minus DC Voltage

G: Power supply Ground

V+: Plus DC Voltage

R/O: Right Channel of MD1102's Output

R/I: Right Channel of Aux. Input

GND: Analog Ground

L/O: Left Channel of MD1102's Output

L/I: left Channel of Aux. Input

Settings in your computer

Depending on your computer operation system, you may have to make changes on your computer setting in some cases. To most of users, making changes in computer settings is a technical and complicate job, however, most of the computers nowadays are configured as a Plug and Play feature. Should you have any technical problems during installations, please consult AMC dealer or distributor in your country.

SPECIFICATIONS

Power Supply

Input DC voltage (V-&V+) range, unregulated 12V to 35V
Input DC current 100mA

USB Input

Compatibility USB version 1.1 and USB Audio Class Spec 1.0
Data rate (full speed) 12Mb/S

Analog performance

S/N ratio ref. 1KHz/0dB, A-Wtd 103dB
THD + Noise ref. 1KHz/0dB 0.016%
Module Output voltage ref. 1KHz/0dB 1.7V
Channel separation ref. 1KHz/0dB >90dB
Frequency response +/-0.3dB

Physical

Module Dimension(WxHxD) 115x25x55mm
Net weight 43g

Weltronics Corp. reserved the right to improve its products at any time. Specifications are subject to change without notice.

WELTRONICS CORP.

LONDON/L.A.

AMC Web: <http://www.amchome.com>

PN: 21R-4229